

# GRAFITYP

makes you stick



Floor graphics solutions

Indoor . outdoor

[grafityp.com](http://grafityp.com)

**Graftyp offers you an innovative way of communication of your commercial messages and signage.**

# Floor graphic solutions

The days when we applied publicity and signs only to walls and panels are behind us for a while now. Today, we increasingly often use the floor to convey a message. But nowhere is a film put more to the test than on the floor. The challenge is up to you to offer your customers a solution for these applications, **which is good and stays good** – no matter how many feet are going to shuffle over the publicity or sign you applied.

That is why we are developing and manufacturing a complete range of structured media with antiskid properties for indoor as well as outdoor use, so you can offer **the right solution for each of your customers' requests.**

**We make self adhesive products that stick, and will make you stick. We are Graftyp.**



# GRAFITYP

**makes you stick**

The most important questions that arise: where do you want to put your message (inside or outside, on a smooth floor or on carpet,...) and how long should it last.

## INDOORS

### FLOORPRINT (ref. FLOORPR)

Monomeric "two-in-one" print film – 230µm – R10  
Print directly on the white structured pvc film  
For short-term indoor applications  
No laminate required

### FLOORPRINT HIGH TACK (ref. FLOORPRHT)

Monomeric "two-in-on" print film – 230µm – R10  
Print directly on the white structured pvc film  
For short term indoor applications on low-pile carpet and on smooth/structured floors  
No laminate required

### FLOOR GRAPHIC LAMINATES (ref. FLOOR and SOL)

Monomeric laminates - FLOOR 200µm, SOL 125 µm – R9  
Print on any monomeric Grafiprint print film and laminate it with FLOOR or SOL  
For medium (SOL) to long term (FLOOR) indoor applications

## OUTDOORS

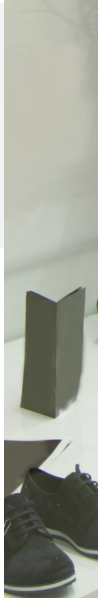
### STREETPRINT (ref. STREETPR)

Polymeric print film – 75 µm  
Print directly on the white structured pvc film  
For short term outdoor applications  
To be used in combination with Grafiprint Streetfloor laminate

### STREETFLOOR (ref. STREETFL)

Polymeric laminate – 80 µm – R12 (DIN 51130:2014-02 (1) certified)  
Print on Grafiprint Streetprint print film and laminate it with STREETFLOOR  
For short term outdoor applications  
Wet application  
Very good antiskid properties

BROFG21



# OUR COMPLETE RANGE OF SOLUTIONS

## Signmaking vinyls

### Monomeric

Promo-series

100-series

### Polymeric

200/300 series

### Cast

Graficast series

### Non-PVC

GEF series

### Translucent

TL series

### Etched glass films

## Print media

### Monomeric

### Polymeric

### Cast

### Special formula

### Non-PVC

### Wall deco

## Laminates

### Monomeric

### Polymeric

### Cast

### Special formula

### Non-PVC

## Wrapping films

### Standard

Glossy Polymeric Wrap

Matt Polymeric Wrap

Matt Super Cast

Gloss Super Cast

### Protective

Paint protection film

### Decorative

Leather

Pearl

Colour wave

Metallic

Matt

Satin

Brushed

Carbon

Stardust

Flock

**HOW MAY  
WE HELP YOU?**

**GRAFITYP**  
makes you stick



## Headquarter - Belgium

Grafityp Selfadhesive Products

### Office

Stationsstraat 43  
3530 Houthalen, BELGIUM

### Plant & logistics

Centrum-Zuid 1539  
3530 Houthalen, BELGIUM

+32 11-600.850  
sales@grafityp.com

## Subsidiary - UK

Grafityp U.K. Ltd

Grafitack House  
103 Mariner, Tamworth -  
Staffordshire  
B79 7UL UNITED KINGDOM

+44 (0)1827-300500  
fax +44 (0)1827-51333  
sales@grafityp.co.uk

PRINTED ON FSC PAPER

